

Heart Diagram

pulmonary (lung) / systemic (body)

aorta

superior vena cava

right pulmonary artery

right pulmonary veins

right atrium

valve

right ventricle

inferior vena cava

left pulmonary artery

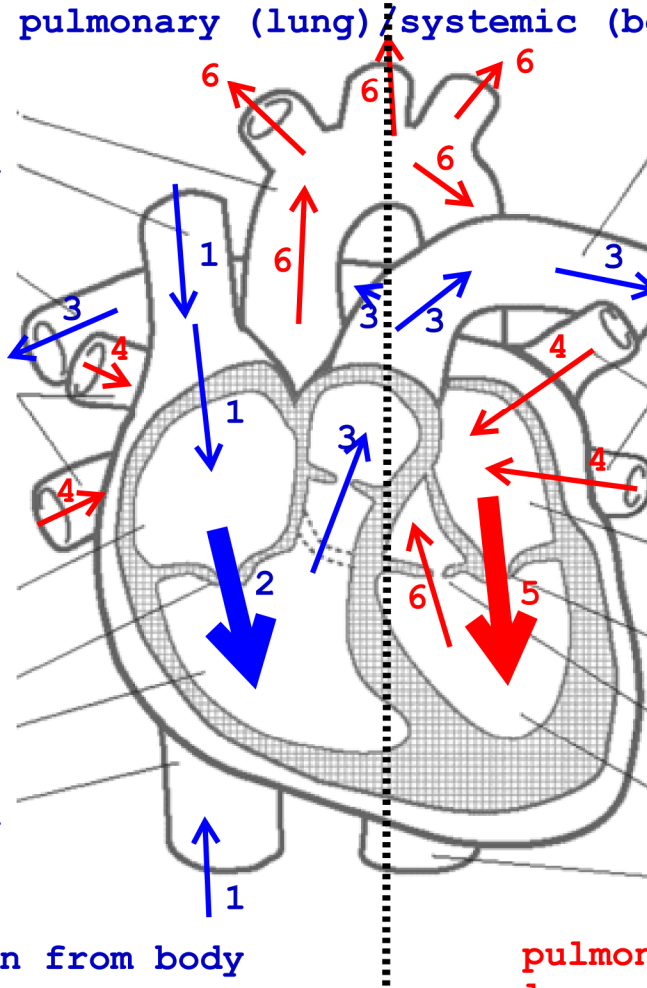
left pulmonary veins

left atrium

valve

valve

left ventricle



vena cava return from body
 pulmonary artery to lungs
 deoxygenated

pulmonary veins return from lungs
 aorta to body
 oxygenated

1. Deoxygenated Blood returning from body
2. Deoxygenated Blood pumped from atrium into ventricle (lub)
3. Deoxygenated Blood pumped from ventricle to lungs (dub)
4. Oxygenated Blood returns from lungs
5. Oxygenated Blood pumped from atrium into ventricle (lub)
6. Oxygenated Blood pumped from ventricle to body (dub)