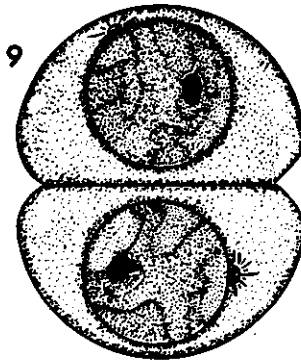
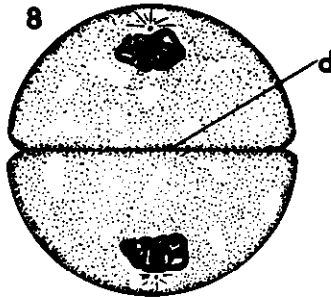
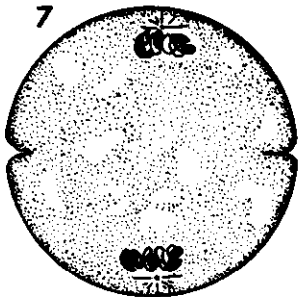
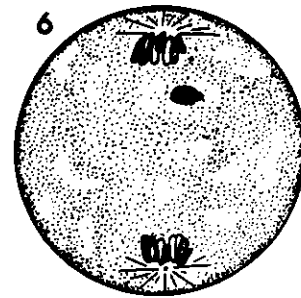
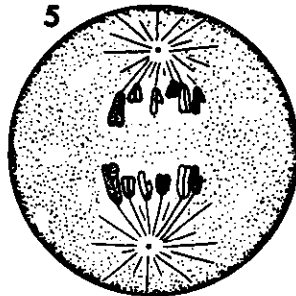
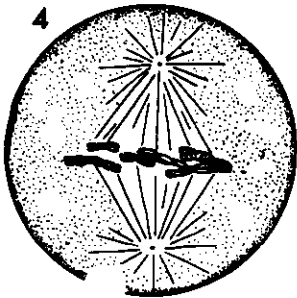
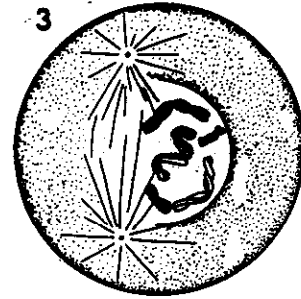
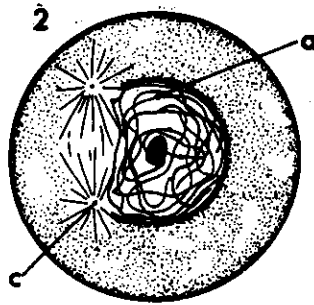
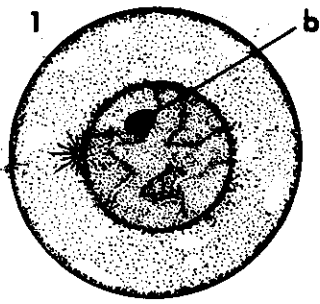


# ANIMAL MITOSIS



1. Interphase
2. Early prophase
3. Early metaphase
4. Late metaphase
5. Early anaphase
6. Late anaphase
7. Early telophase

8. Late telophase
  9. Interphase
- a. Centromere  
b. Nucleolus  
c. Centriole  
d. Cell membrane

# PLANT MITOSIS

